



SJG-1000A

3D全自动免模机

3D Full automatic edging machine

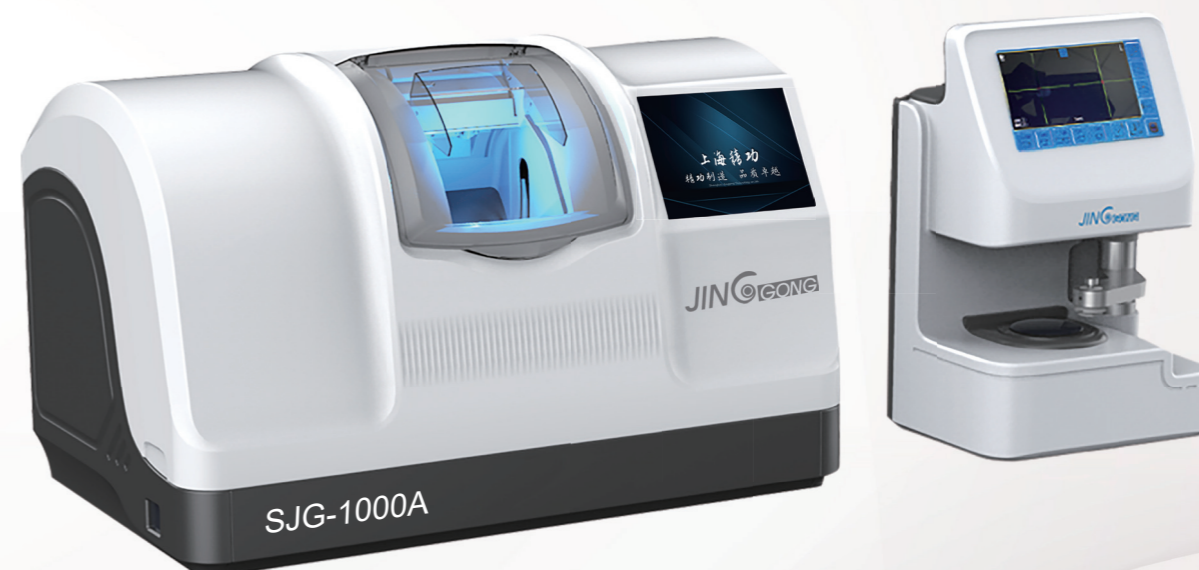
SJG-1000A

AUTO LENS EDGER磨边机技术参数

外型尺寸 (Dimension)	680mmx460mmx450mm
重量 (Weight)	60KG
电压 (Voltage)	AC 220v/110v 50/60Hz
功率 (Power)	550w
磨片直径 (Size range)	ø22-80mm
磨片夹紧力 (Clamping pressure)	三档可调 (Third gear adjustable)
砂轮直径 (Wheel diameter)	ø 90mm
液晶屏 (Touch screen)	8寸真彩触摸屏 (8inch capacitive screen)

AUTO LENS SACNNER 扫描仪技术参数

外型尺寸 (Dimension)	230mmx370mmx200mm
重量 (Weight)	5kg
电压 (Voltage)	AC 220v/110v 50/60Hz
功率 (Power)	60w
液晶屏可调角度 (Screen tilt angle)	20°-100°
液晶屏 (Touch screen)	7寸真彩触摸屏 (7inch capacitive screen)
可连接设备数量 (Quantity of connecting with the main machine)	1台 (1 unit)



上海精功精密仪器有限公司

Tel: 021-681 483 88 Fax: 021-681 480 58

E-mail: Jenny.yq.liang@jinggongsh.com

Web: www.jingqongsh.com.cn

Add: 上海市浦东新区下盐公路800号8号二楼

上海精功精密仪器有限公司

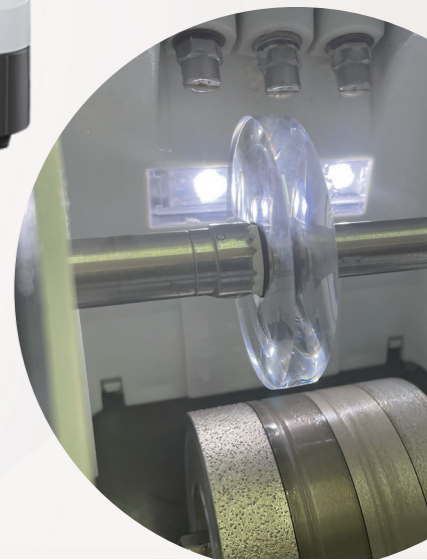
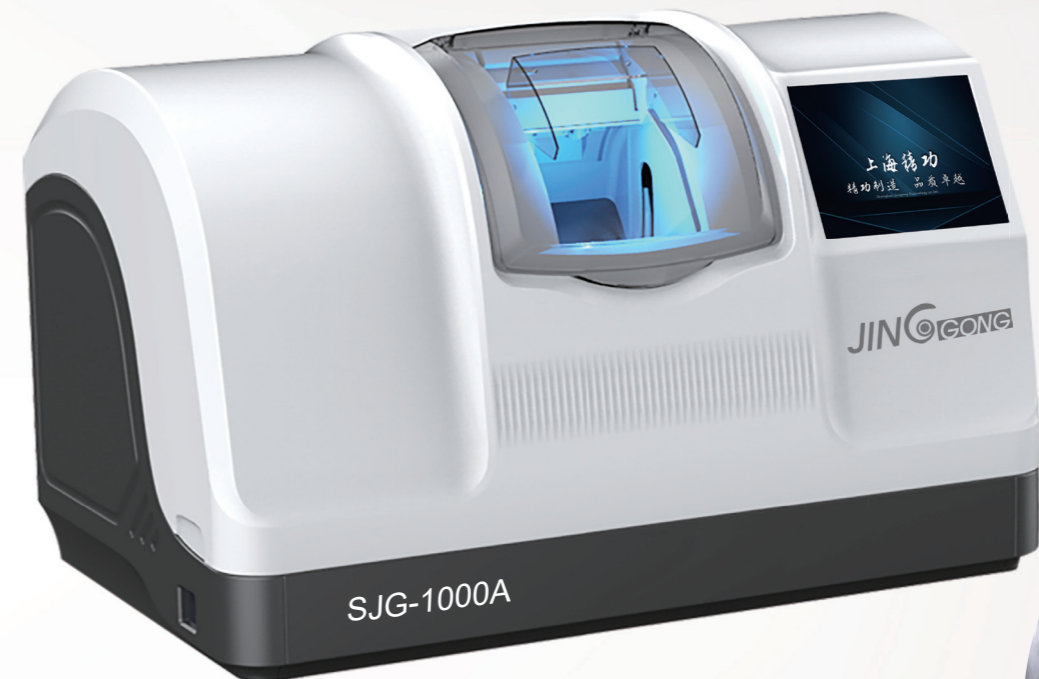
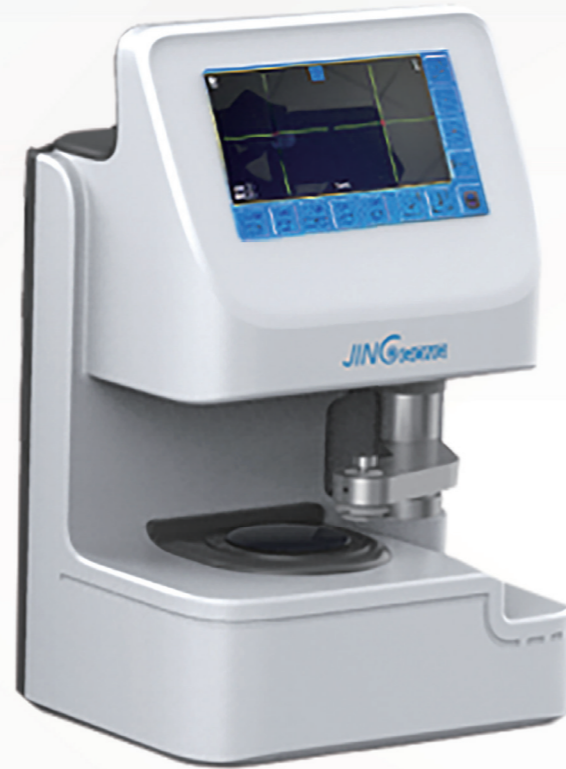
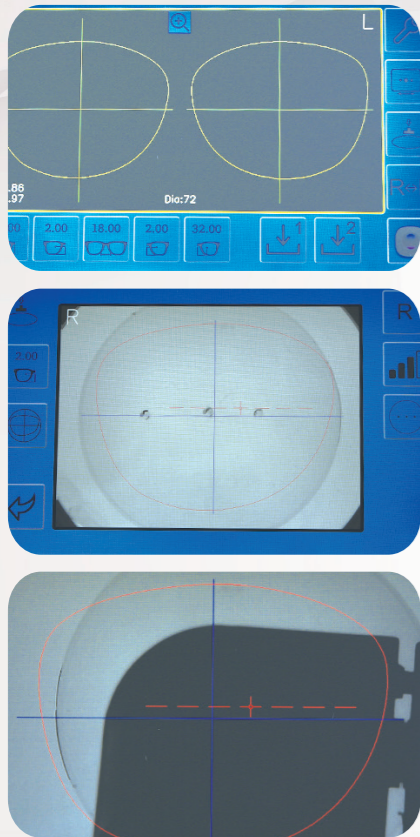
SHANGHAI JINGGONG PRECISION INSTRUMENT CO., LTD

3D全自动免模机

3D Full automatic edging machine

SJG-1000A 光学扫描仪中心

SJG-1000A 主机



扫描系统:

- 集光学扫描、中心定位为一体
- 0.5秒即可精确获得镜架衬片形状尺寸
- 实时成像引导确认是否达到最佳中心位置
- 自动消除镜片度数、棱镜及人为视差影响
- 高分辨率真彩800*600 7寸触摸屏
- 操作简单、低故障、免维护

Tracing system:

- Set the optical scan, the center of positioning as one
- It takes 0.5 seconds to get the frame shape of the frame
- Real-time imaging guidance confirms whether the best center position is reached
- Automatically eliminate the lens degree, prism and artificial parallax effect
- High resolution 800*600 true color 7 inch touch screen
- At the same time connect two SJG-800A automatic milling machine composed of processing center
- Simple operation, low failure, maintenance-free

磨边系统:

- 具有自动尖边功能(可对尖边位置进行多种模式选择)
- 可加工玻璃,树脂,太空片等各种材质镜片
- 可对尖边或平边进行抛光
- 多种研磨方式压力选择,满足不同镜片的需求
- 具备联机功能

Edging system:

- Have auto bevel setting (you can choose multiple position of bevel position)
- Glass, resin, space film and other materials of the lens can be processed, rapid edging to be molding
- Bevel or platband can be polished.
- Variours grinding pressure meet the demands of different lenses
- On-line function